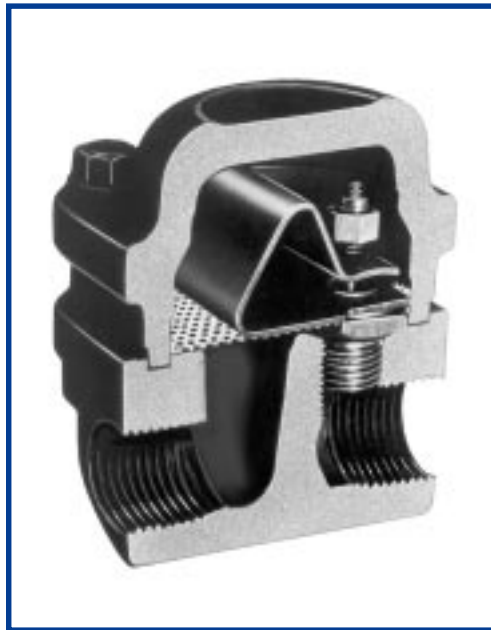


Models DM6 & DM12 Steam Traps

For steam main dripleg and critical tracing



A line of lightweight, yet rugged, steam traps that provide modulating discharge of light condensate loads without the loss of live steam. These fully maintainable steam traps feature energy-efficient operation with excellent start-up capacities for services with differential pressures up to 150 psi.

- **Single blade element** — offers long-term, trouble-free service because it's not prone to dirt build-up as encountered with many other bimetal designs.
- **Stainless Steel internals** — highly resistant to fatigue and corrosion and completely renewable.
- **Built-in check valve** — prevents backflow during shutdown.
- **Modulating discharge** — automatically adjusts to operating pressure and load, overcoming problems associated with cyclic discharge.
- **Continuous air and CO₂ venting** — maximizes heat transfer while minimizing corrosion.
- **Fast start-up capabilities** — due to high cold discharge capacities.

Bestobell Models DM6 - DM12 Steam Traps

Specifications

Maximum Differential Pressure:

- DM6: 70 psi (4,83 bar)
- DM12: 150 psi (10,34 bar)

Maximum Body Pressure: 750 psig (52 bar)

Maximum Body Temperature: 650°F (343°C)

Line Sizes: 3/8", 1/2" & 3/4" (10, 15, 20 mm)

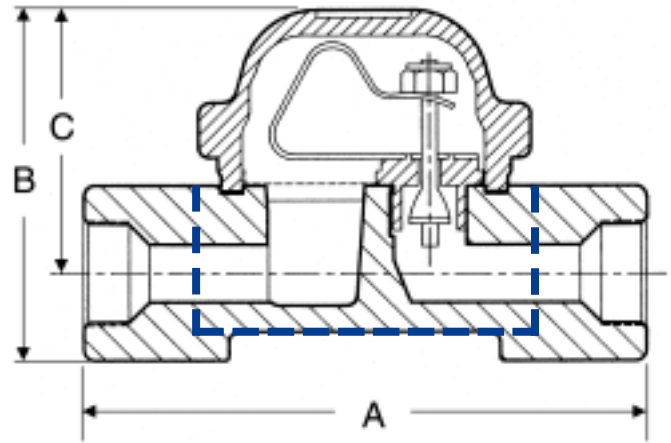
End Connections: threaded (NPT), BSPT, BSPP, or socket weld

Materials:

- Body & Cover: forged Carbon Steel
- Valve Seat & Cone: Stainless Steel
- Bimetal: Stainless Steel
- Strainer: Stainless Steel (Note: an integral strainer is included under the cover within the DM6 & DM12.)
- Nuts & Bolts: Steel
- Gasket: flexible Graphite

Mounting: from horizontal to vertical (see Installation & Maintenance Instructions). Self-draining and freeze-resistant when mounted in vertical position.

Dimensions



Note: 1/2" & 3/8" shape is outlined with dashed blue line.

Size		A	B	C	D	WT.
3/8", 1/2"	Inches	2-7/16	3	2-1/4	2-7/16	2.2#
10/15 mm	mm	62	76	57	62	1 kg
3/4"	Inches	4-9/16	3-1/8	2-1/4	2-7/16	3.0#
20 mm	mm	116	79	57	62	1,4 kg

Notes: dimension D is overall width; shape of 3/8" & 1/2" sizes is outlined with dashed blue line.

Capacity Charts: Condensate Capacity at Differential Pressure

Model DM6		Consider Model 3A in this pressure range.								
Size	Differential Pressure, psi (bar)	2 (0,14)	5 (0,34)	10 (0,69)	20 (1,38)	30 (2,07)	40 (2,76)	50 (3,45)	60 (4,14)	70 (4,8)
3/8", 1/2", 3/4"	Cold start-up, lbs/hr	500	700	1000	1700	2000	2300	2400	2600	2700
	Hot running load, lbs/hr	30	65	90	110	130	140	150	150	150
	Cold start-up, Kg/hr	227	317	454	771	907	1043	1089	1179	1225
	Hot running load, Kg/hr	13	29	40	49	58	63	68	68	68

Model DM12		Consider Model DM6 in this pressure range.								
Size	Differential Pressure, psi (bar)	10 (0,69)	20 (1,38)	30 (2,07)	50 (3,45)	70 (4,8)	90 (6,2)	110 (7,58)	130 (8,96)	150 (10,34)
3/8", 1/2", 3/4"	Cold start-up, lbs/hr	750	1200	2200	2900	3500	4000	4200	4300	4500
	Hot running load, lbs/hr	60	70	80	90	100	105	110	110	115
	Cold start-up, Kg/hr	340	544	998	1315	1588	1814	1905	1950	2041
	Hot running load, Kg/hr	27	31	36	40	45	47	49	49	52

Note: flow rates based on discharge to atmospheric pressure, valid for back pressures up to 20% of inlet pressure. Higher back pressures require reset of control element to obtain these capacities. Consult factory for details.