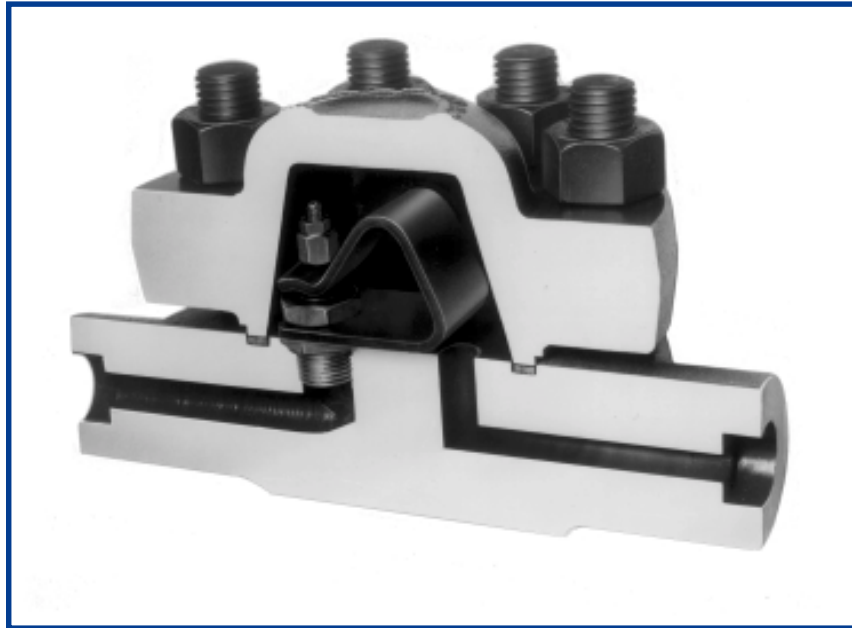


Models DM160-DM320

Steam Traps for High Pressure Services



An excellent choice for high pressure steam main dripleg service on low to medium load applications with differential pressures as high as 2,000 psi. Fast start-up, and reliable operation with no live steam loss.

- **No loss of live steam** — for greater energy efficiency, extended seat life.
- **Single blade element** — a superior element design combining thermostatic and thermodynamic forces for long-term, trouble-free service. The single blade is not prone to dirt build-up as found with many other bimetal designs.
- **Stainless Steel internals** — highly resistant to fatigue and corrosion and completely renewable.
- **Built-in check valve** — prevents backflow during shutdown.
- **Modulating discharge** — automatically adjusts to operating pressure and load, overcoming problems associated with cyclic discharge.
- **Continuous air and CO₂ venting** — maximizes heat transfer while minimizing corrosion.

Bestobell Models DM160-DM320 Steam Traps

Specifications

Line Sizes: 1/2", 3/4", 1"

Maximum Differential Pressure:

- Model DM160: 1500 psi (103 bar)
- Model DM320: 2000 psi (138 bar)

Maximum Body Pressure: 2400 psig (166 barg)

Maximum Body Temperature: 1000°F (538°C)

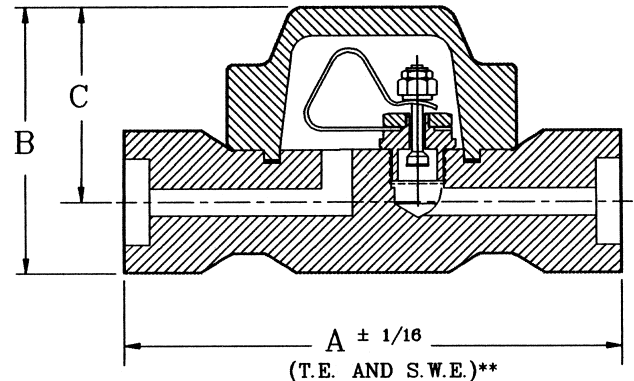
End Connections: threaded (NPT), BSPT, BSPP, socket weld, butt weld, or raised face flanges (ANSI 1500, 2500 or DIN)

Materials:

- Body & Cover: forged Chrome-Moly (F11)
- Valve Seat & Cone: Stainless Steel/Stellite
- Bimetal: Stainless Steel
- Strainer: Stainless Steel
- Nuts & Bolts: forged Steel
- Gasket: flexible Graphite

Mounting: from horizontal to vertical (*see Installation & Maintenance Instructions*). Self-draining and freeze-resistant when mounted in vertical position.

Dimensions



1/2" - 1"	A	B	C	D	WT.
Inches	10-1/4	5-3/8	4-1/8	7-1/2	48 lbs.
mm	260	137	105	191	22 kg

Notes: dimension D is overall width. Dimensions shown are for traps with NPT or SW ends; for dimensions on traps with flanged ends, please consult factory.

Capacity Charts: Condensate Capacity at Differential Pressure

DM160		Consider DM100 in this pressure range			
Size	Differential Pressure, psi (bar)	900 (62,1)	1100 (75,9)	1300 (89,7)	1500 (103,5)
1/2", 3/4" & 1"	Cold Start-Up, lbs/hr	2000	3000	4000	4500
	Hot Running, lbs/hr	400	550	700	750
	Cold Start-Up, Kg/hr	907	1361	1814	2041
	Hot Running Load, Kg/hr	181	250	318	340

DM320		Consider DM160 in this pressure range.			
Size	Differential Pressure, psi (bar)	1200 (82,8)	1500 (103,4)	1750 (120,7)	2000 (137,9)
1/2", 3/4" & 1"	Cold Start-Up, lbs/hr	3500	4500	6000	7000
	Hot Running, lbs/hr	600	750	900	1000
	Cold Start-Up, Kg/hr	1588	2041	2722	3175
	Hot Running Load, Kg/hr	272	340	408	454

Note: flow rates based on discharge to atmospheric pressure, valid for back pressures up to 20% of inlet pressure. Higher back pressures require reset of control element to obtain these capacities. Consult factory for details.